

IPDET

INTERNATIONAL PROGRAM FOR
DEVELOPMENT EVALUATION TRAINING

Evaluation in COVID-19 Pandemic context in Rwanda

Dr Albert TUYISHIME

14.10.2020



IEG
INDEPENDENT
EVALUATION GROUP

WORLD BANK GROUP
World Bank • IFC • MIGA

Centrum für Evaluation
CEval
Center for Evaluation

u^b

Introduction



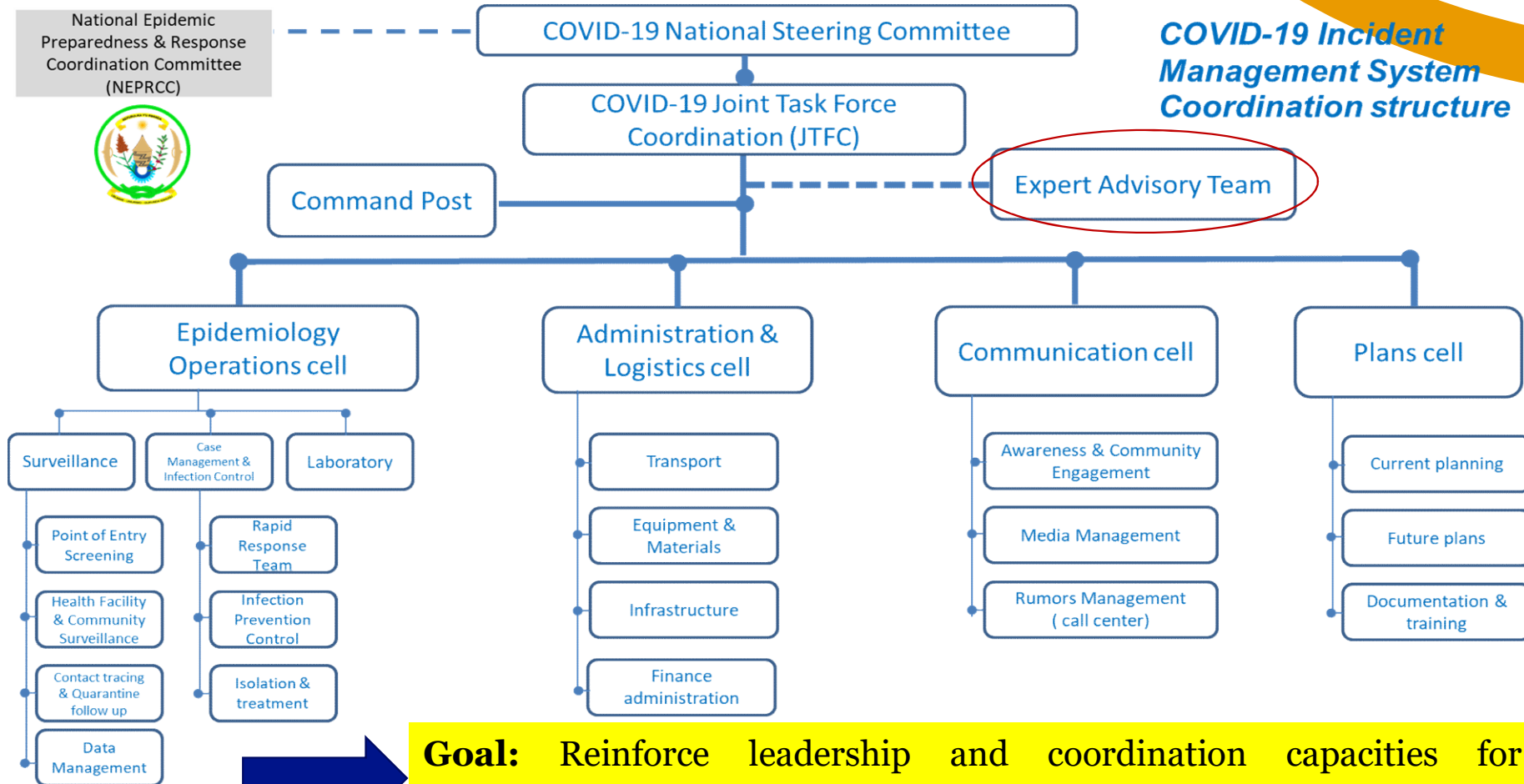
- On 30th January 2020, the WHO Director General declared the outbreak of COVID-19 a Public Health Emergency of International Concern (PHEIC)
- Rwanda developed the COVID-19 National Preparedness and Response Plan
- Rwanda reported 1st COVID-19 case on 14th March 2020

IPDET

Rwanda COVID-19 Preparedness and Response Plan

- This COVID-19 Preparedness and Response plan was intended to guide preparedness, early detection and early response for Covid-19 in Rwanda
- Its main goal was to enhance the capacity of Rwanda to prevent, timely detect and effectively respond to a potential COVID-19 outbreak in Rwanda
- The overall objectives of this plan are:
 - To facilitate coordination and strengthen inter-sectoral and intra-sectoral coordination, engagement and partner participation
 - To enhance national capacities for prevention, promptly detection, and timely response
 - To create and raise public awareness
 - To improve logistics management to enhance operations support
 - To ensure the enforcement of safety and security measures
 - To mobilize internal and external resources

Coordination structure of COVID-19



COVID-19 Incident Management System Coordination structure

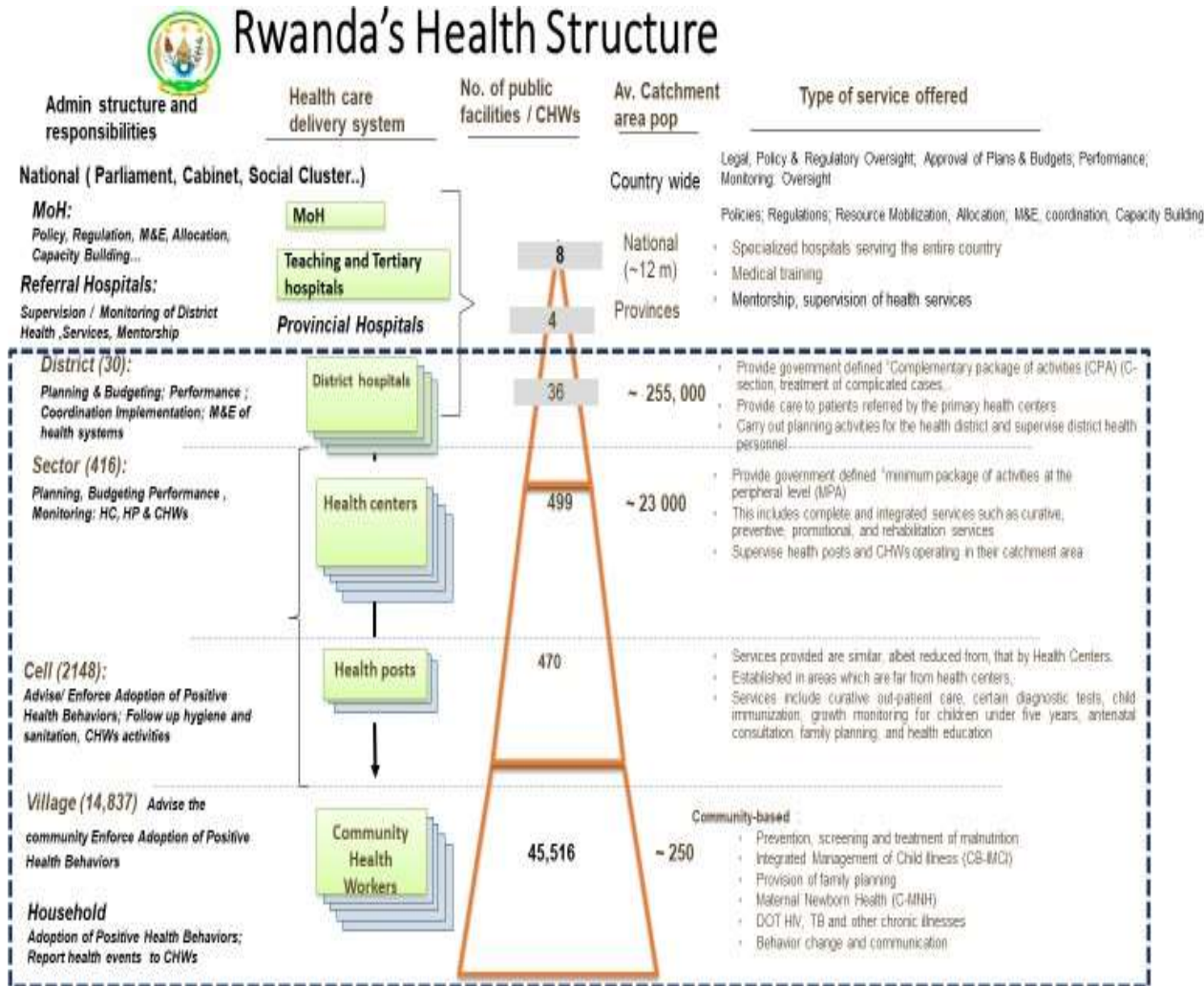


Goal: Reinforce leadership and coordination capacities for outbreak preparedness and readiness of Covid-19

COVID-19 Response – Key actions put in place to manage the pandemic

- Joint Taskforce (RRTs, Tracers and investigators) and COVID 19 **Expert Advisory Team** established
- Strategies for case identification, testing, case-contact tracing, quarantine and isolation, case management
- Preventive measures (social distancing, masks, hygiene) – To limit the spread of infection.
- Established treatment centers and quarantine Centers at national and district level
- Community engagement and communication
- Countrywide lockdown
- Management of imported cases (mandatory quarantine, track drivers quarantine)
- COVID-19 patients Home Based Care launched in September 2020

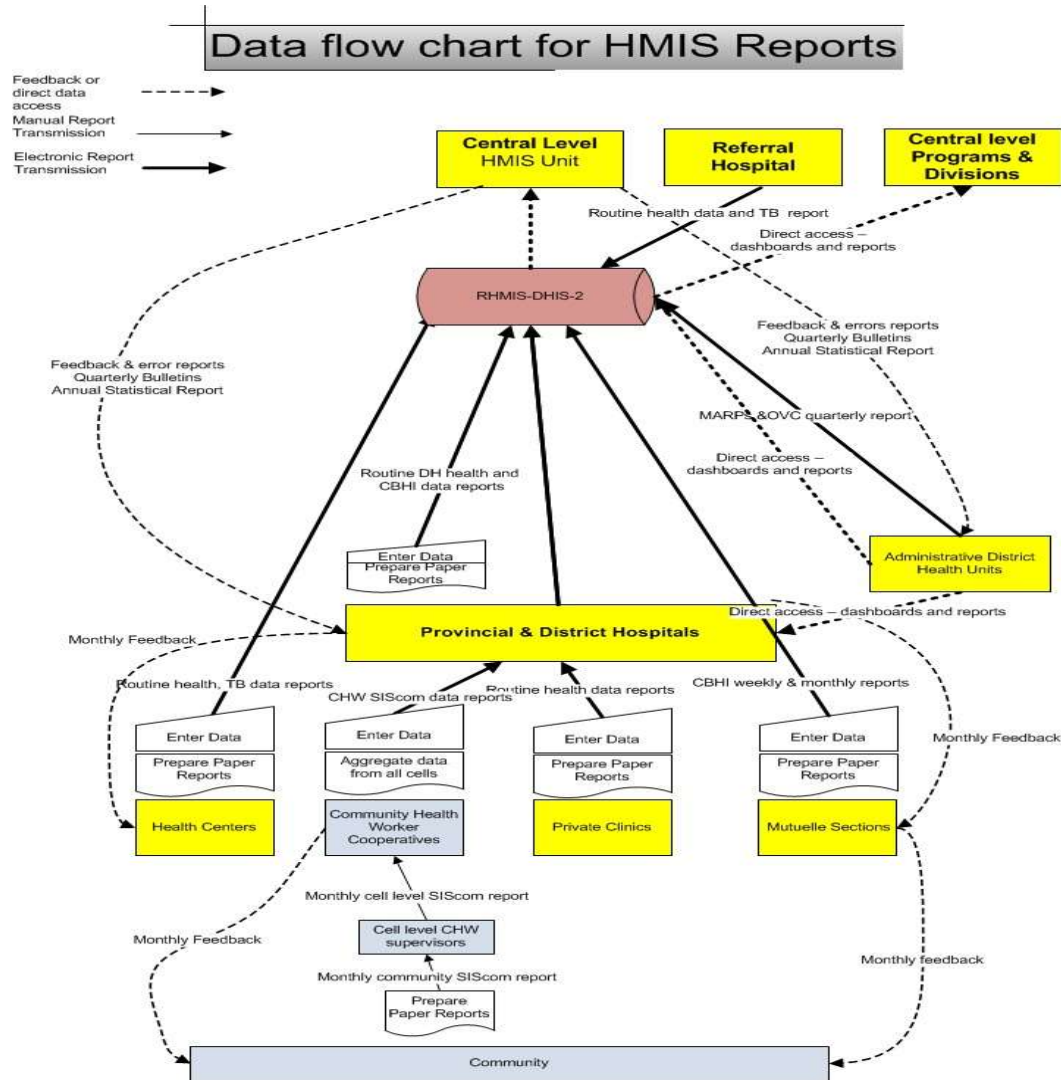
Health sector M&E system to respond to COVID-19 Pandemic in Rwanda



➤ COVID 19 reporting is integrated into existing reporting system

IPDET

Health sector M&E system to respond to COVID-19 Pandemic in Rwanda



Health sector M&E system to respond to COVID -19 Pandemic in Rwanda

During Covid-19 pandemic especially in the response period, the following M&E activities have been adjusted:

- External Data Quality Assessment team
- Plan of trainings and mentorships
- Most in-person M&E coordination meetings shifted to online meetings
- Specific surveys including the drive-through testing in high risks groups and specific areas
- M&E team of the health facility combining daily Covid-19 reports with submission of other routine reports.
- Trend analysis of COVID-19 related calls in the call center is performed on weekly, monthly and quarterly basis for surveillance and response

Data use for decision making during COVID-19 pandemic

Data collection, analysis for timely decision making at national and local level including:

- Decisions related to lockdown and localized lockdown
- Decisions related to opening quarantines and treatment centers
- Dashboards developed at both central and decentralized to inform decision
- Decisions related to resources mobilization and allocation
- Decision related to surveillance and targeted testing

COVID-19 Evaluations and Decision Making

Evaluation is even more critical at this time of a pandemic, as it provides evaluative evidence on what works, why, for whom and under what circumstances

- Covid-19 Local and Imported cases
- Impact of Covid-19 on Service Deliveries in Health Facilities and Community with focus on Reproductive Maternal Newborn and Health Reproduction
- Piloting of Covid-19 home based care before scaling up

Lessons learnt

Leverage existing resources and capacities to maximum

advantage: The Ministry of Health leveraged human resources (from Academia, Partners, Private Sector) who had expertise in Monitoring and evaluation

Multisectoral approach to make progress: Bring on board all partners with different expertise in M&E



THANK YOU